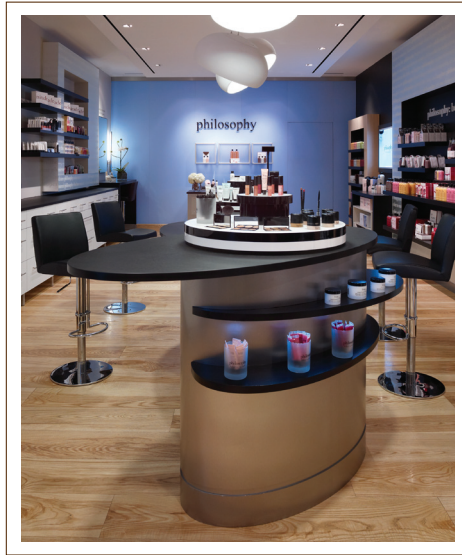


WHAT MAKES CARLISLE ENGINEERED WOOD FLOORS SO UNIQUE AND DIFFERENT?



Carlisle uses the same slow-growth, sustainably harvested trees to build our solid wood floors as our engineered wood floors.

Due to the custom nature of each floor, our engineered floors can be designed unfinished or pre-finished with a wide variety of Carlisle Custom Coat™ stains and topcoats.

You can select from any of our pine, hardwood, or textured floors to design your engineered floor.

Carlisle uses a unique cutting method called “sawn face” to produce the flooring wear surface. Most engineered floors use a “rotary peal” technique that degrades the natural beauty of the wood and is prone to cracking and checking. Carlisle’s method produces the exact same look—grain, character, heartwood and coloration—as on our solid wood floors.

You can design a Carlisle engineered floor with planks up to 9" wide, 2' to 12' long, and up to ¾" thick. Most engineered floors are only 5/8" thick and have widths of only 3" to 5" and lengths of 1' to 6'. The larger thicknesses, widths, and lengths available from Carlisle make a dramatic difference in the overall look and stability of your floor.

Our engineered floors are the same thickness as our solid wood floors. This means that they have the same legendary Carlisle longevity, resistance to wear and tear, and ease of maintenance.

Carlisle uses the best platform in the industry to support our wear surface. We use 11-ply Baltic birch construction for superior stability.

Carlisle uses low-VOC, formaldehyde-free glue in our engineered floors. This minimizes any off-gassing and complies with the strictest environmental laws and all LEED certification programs.

Each floor is custom...American made, one board at a time...the “Carlisle way.”